

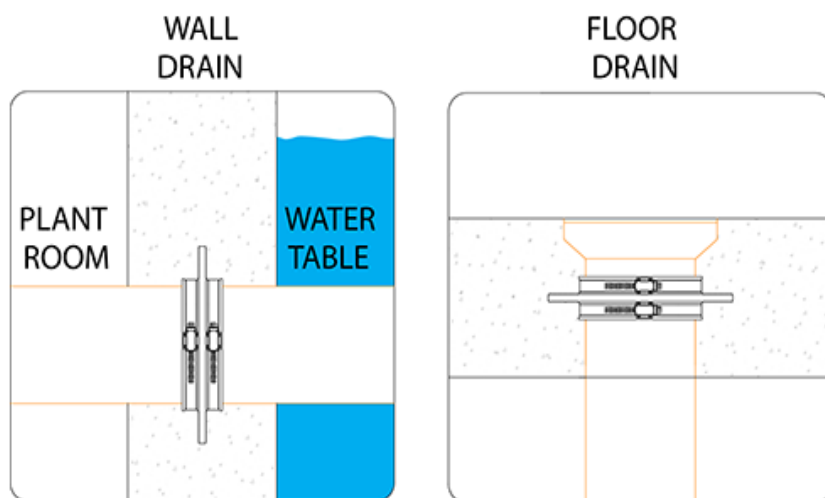
# FERNCO Puddle Flanges Product Guide



# GUIDE

The Fernco Puddle Flange, manufactured by Fernco UK, is used where pipes are to be passed through walls, masonry and floor slabs. In the case of water, ground-water or elevated groundwater levels near watercourses / rivers, the Fernco puddle flange placed on the pipe in the center of the masonry protects the building against penetrating moisture. In the case of swimming pools and floor troughs, the wall collar protects against leaking water or the subsoil in front of leaking liquids.

Fernco Puddle Flanges provide a quick, easy and effective solution. They can be connected to all standard pipe materials such as steel, plastic, stoneware, concrete, cast iron, HDPE etc from sizes 22mm outside diameter to any size above manufactured to project requirements. Common applications include, concrete walls, concrete tanks, manhole chambers, shafts, floor slabs/foundation plates and basements.



# PUDDLE FLANGES

## MOULDED AT THESE SIZES

CODE	DESCRIPTION
PF036-044	PUDDLE FLANGE 36 - 44MM
PF045-056	PUDDLE FLANGE 45 - 56MM
PF057-071	PUDDLE FLANGE 57 - 71MM
PF072-084	PUDDLE FLANGE 72 - 84MM
PF085-101	PUDDLE FLANGE 85 - 101MM
PF102-121	PUDDLE FLANGE 102 - 121MM
PF122-136	PUDDLE FLANGE 122 - 136MM
PF156-176	PUDDLE FLANGE 156 - 176MM
PF177-190	PUDDLE FLANGE 177 - 190MM
PF191-212	PUDDLE FLANGE 191 - 212MM
PF213-237	PUDDLE FLANGE 213 - 237MM
PF245-270	PUDDLE FLANGE 245 - 270MM
PF273-300	PUDDLE FLANGE 273 - 300MM
PF304-341	PUDDLE FLANGE 304 - 341MM

NOTE: Puddle Flanges are moulded smaller than the maximum pipe size, so in some cases will need to be stretched onto the pipe

### NOTES:

- Fitted Puddle Flanges have an outside diameter 100/110mm larger than the pipe onto which they are installed (dependent on size).
- Puddle Flanges are, in some cases, supplied with the inside diameter of the seal smaller than the pipe outside diameter and may have to be stretched over the pipe during installation. Pipe Lubricant should be used and can be supplied with your order.
- Puddle Flanges do not provide axial restraint so they should not be used when axial loading on the pipe is present. The pipe has to be fully supported to withstand the concrete pouring process.
- Concrete cover should be 50mm against every surface around the Puddle Flange. Waterproof concrete should be used.

## FABRICATED TO BESPOKE SIZES

CODE	DESCRIPTION
PF300	PUDDLE FLANGE 300 - 399MM
PF400	PUDDLE FLANGE 400 - 499MM
PF500	PUDDLE FLANGE 500 - 599MM
PF600	PUDDLE FLANGE 600 - 699MM
PF700	PUDDLE FLANGE 700 - 799MM
PF800	PUDDLE FLANGE 800 - 899MM
PF900	PUDDLE FLANGE 900 - 999MM
PF1000	PUDDLE FLANGE 1000 - 1099MM
PF1100	PUDDLE FLANGE 1100 - 1199MM
PF1200	PUDDLE FLANGE 1200 - 1299MM

Note: All fabricated Puddle Flanges are manufactured and obtained from Fernco UK. Please allow 12 days for manufacturing and airfreight\*. Upon ordering please quote the outside diameter of the pipe in mm.  
\*Freight charges will apply.



### MATERIAL

EPDM Rubber, 1.4401 (316) Stainless Steel. *Couplings with a different material makeup are available on request.*

### PRESSURE RATING

Moulded Puddle Flanges are watertight to 10bar. Fabricated Puddle Flanges are watertight to 5bar

### TEMPERATURE RANGE

EPDM Puddle Flange = -50°C to 80°C constant, 100°C intermittent  
Nitrile Puddle Flange = -20°C to 45°C Maximum

### TIGHTENING TORQUE

6Nm / 13Nm (torque displayed on product label)

# PUDDLE FLANGES

## Benefits

- A cost effective solution
- Easy to install
- Can be installed in walls, floors and ceilings
- Good general chemical resistance



## Technical Data

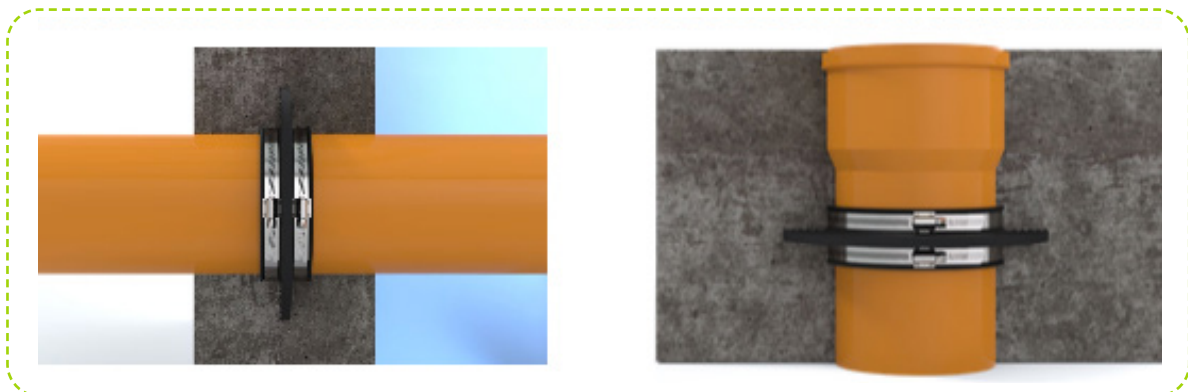
- The independent material testing institute MFGA Leipzig GmbH has tested the Fernco Puddle Flange for its sealing effect and confirmed - depending on the diameter - a seal up to 10 bar.
- The elasticity of the puddle flange allows installation on pipes made of different materials.

## Quality, Standard and Approvals

- Certified by the British Standards Institution (BSI) as a company of assessed capability, with a quality management system which meets the requirements of BS EN ISO 9001:2015
- Fernco are the leaders in wastewater connection innovation; utilising the most advanced methods and techniques for precision-manufactured products, all of which comply with or exceed relevant British and European standards to ensure reliability and sustainability.

## Environment

- Operating Environmental Management Systems which are certified to ISO 14001: 2015.



**FIT HORIZONTALLY OR VERTICALLY**

FOR ABOVE OR BELOW GROUND APPLICATIONS

FOR MORE INFORMATION CONTACT:

# 1800 666 952



[www.leapcivil.com.au](http://www.leapcivil.com.au)

**VICTORIA BRANCH**  
95b Cheltenham Road  
Dandenong, VIC 3175

t: 03 9791 2462  
m: 0403 344 006  
e: [brendan@leapcivil.com.au](mailto:brendan@leapcivil.com.au)

**NSW BRANCH**  
11 York Road,  
Ingleburn, NSW 2565

t: 02 9791 2462  
m: 602 9605 7244  
e: [nathan.h@leapcivil.com.au](mailto:nathan.h@leapcivil.com.au)

**QLD BRANCH**  
9 Aldinga Street  
Brendale QLD 4500

t: 07 3205 6504  
m: 0403 344 008  
e: [paul.d@leapcivil.com.au](mailto:paul.d@leapcivil.com.au)